

## BRIMPTON PRIMARY SCHOOL GIVES TIMBERWORKS EUROPE THE GO AHEAD TO PROVIDE LONG AWAITED ADDITIONAL CLASSROOM SPACE

Brimpton Primary School in West Berkshire has recognised the benefits of our pioneering system which delivers low cost, custom made and sustainable classrooms to the educational market. The school has commissioned Timberworks Europe to supply, build and fit out a new purpose built classroom for delivery in late February 2011 and completion by March/April 2011.



Features will include; an air source heat pump, under-floor heating, larch cladding, tongue and groove vaulted ceilings, roof storage and decks.

The building will be built on strip foundations which significantly reduce disturbance and cost. The classroom will then be manufactured off site over the next 10-12 weeks. It will be delivered to site in a number of floor, wall and roof panels and craned directly from the lorry onto the foundations. The building should be watertight in 3-5 days.

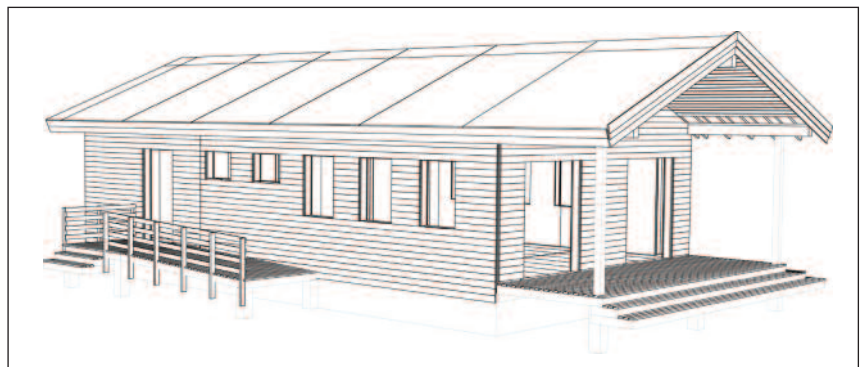
The building will be heated with an air source heat pump delivered through a zoned under-floor heating system which compliments the thermal efficiency of the building. **Our standard external walls are 37% more energy efficient than the current building regulation requirement.**

Sheilagh Peacock, the schools business manager writes;

*“At the beginning of our planning, TWE was working on a classroom for a neighbouring school and following a visit there, we contacted Justin Bentley. This proved to be the beginning of a friendly yet professional working relationship. Justin listened carefully to our needs and, along with the architect, was able to provide us with the plan for a building that would meet the needs of our Foundation Stage, our staff, the wider community and would prove to be a fantastic sustainable building project, ticking all the local authorities’ eco boxes.”*

Justin Bentley, the TWE Director responsible for the project comments;

*“We have worked with the school for a significant period. We have helped them and their architect from initial design meetings, specification, detail functionality meetings and all the way through to the point we are at now. The initial design brief was to provide a building that would be as sustainable as possible, have minimal ongoing running costs, provide an optimal learning environment and be affordable at the same time.”*



Come and see us at ecobuild 2011, Stand TW18, 1st - 3rd March [www.ecobuild.co.uk](http://www.ecobuild.co.uk)

Unit 2 • Grange Farm • Bovingdon  
Hertfordshire • HP3 0LB

t 01442 834 555 m 07900 672 045

Contact: Tom Marriott

[tom.marriott@timberworkseurope.com](mailto:tom.marriott@timberworkseurope.com)



tuesday 01 - thursday 03 march 2011  
ExCel, london [www.ecobuild.co.uk](http://www.ecobuild.co.uk)

[www.timberworkseurope.com](http://www.timberworkseurope.com)

Herriefts Farm • North Newington  
Oxfordshire • OX15 6AF

t 01295 738 789 m 07973 347 384

Contact: Justin Bentley

[justin.bentley@timberworkseurope.com](mailto:justin.bentley@timberworkseurope.com)