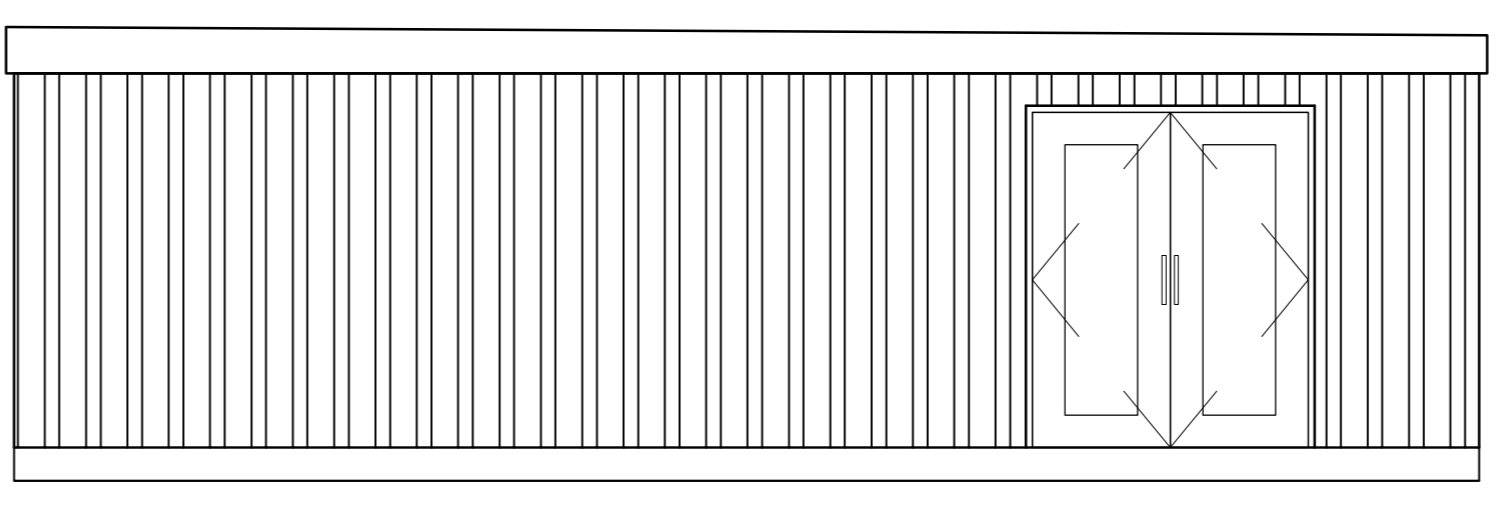
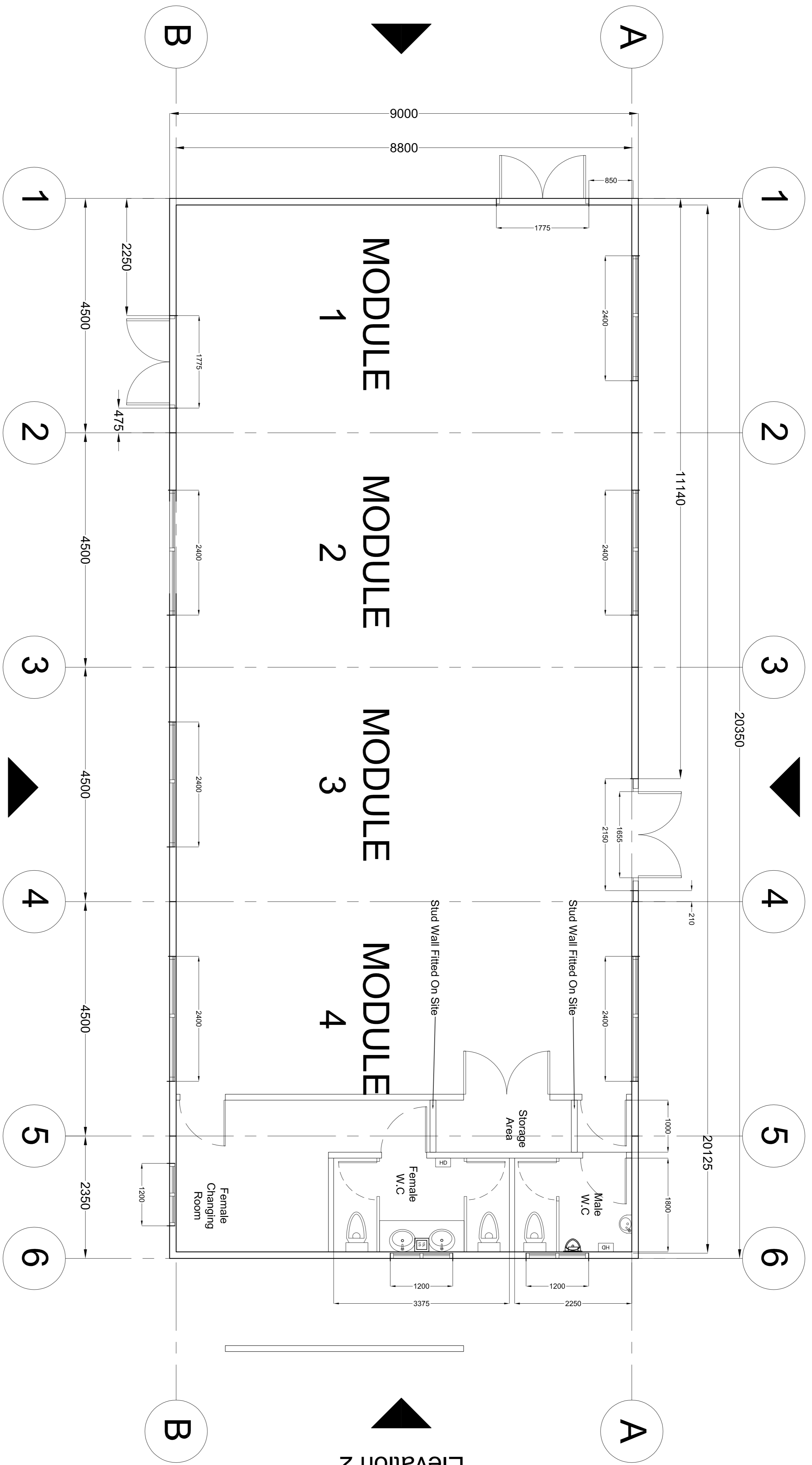


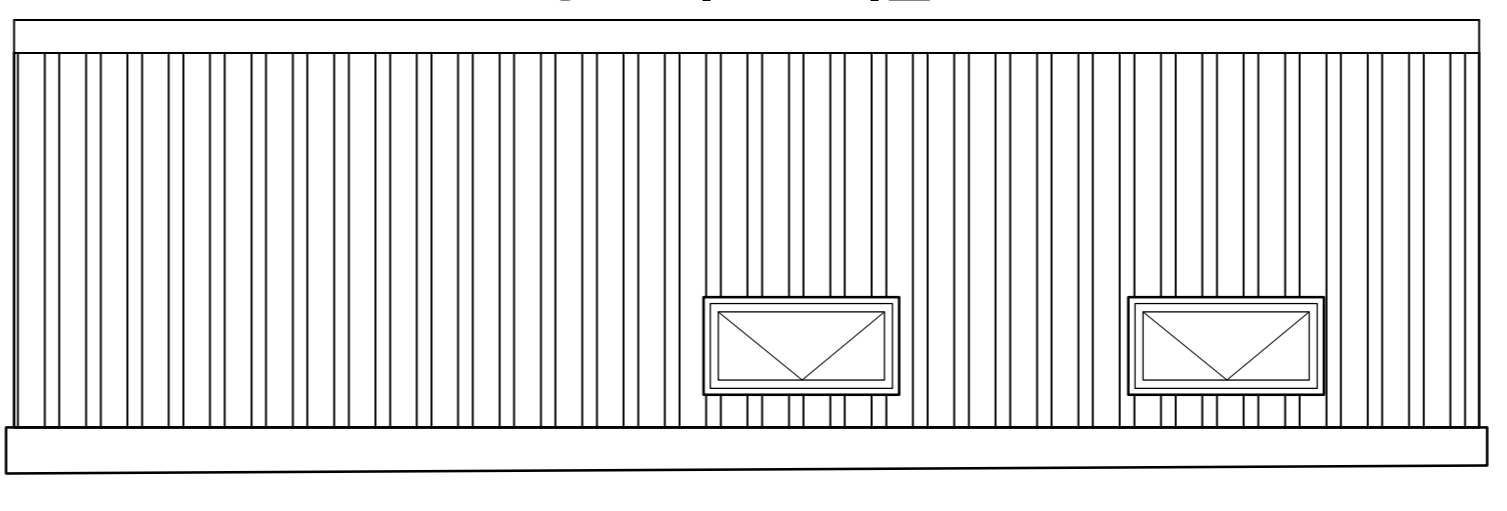
Elevation 1



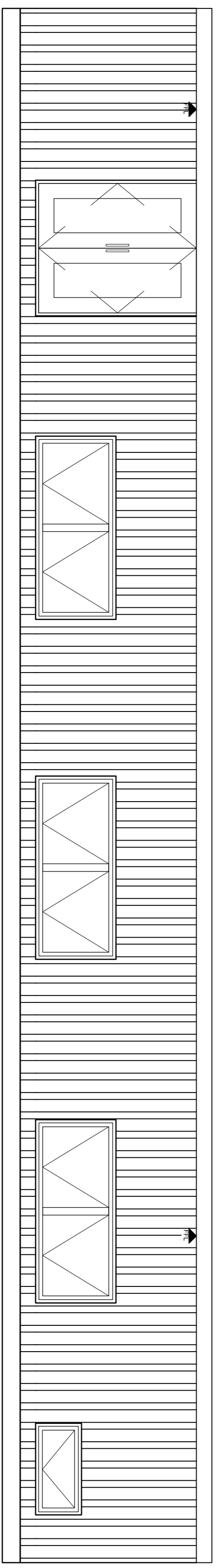
Elevation 4



Elevation 2



Elevation 3



Project title
**Timberworks Europe
Cambridge International School
Function Room**

Drawing title
Plan & External Elevations

Stage
PRELIMINARY

SHUTT MANUFACTURING SOLUTIONS LTD
UNIT A, WOODSIDE ENTERPRISE PARK
NEWTOWN
POWYS
SY16 4LE
TEL: 01686 611 130
FAX: 01466 427 130
WEB: www.sms-tile.eu



THIS DRAWING IS THE PROPERTY OF SMS LTD AND MAY NOT BE COPIED, REPRODUCED OR TRANSMITTED IN ANY FORM OR BY ANY MEANS, ELECTRONIC OR MECHANICAL, WITHOUT THE EXPRESS PERMISSION NOR MAY THE DESIGN OR ANY INFORMATION SHOWN THEREON BE DISCLOSED TO ANY THIRD PARTY. RECEIPT OF ALL DRAWINGS AND INFORMATION CONTAINED THEREIN FROM SMS LTD OR ANY ASSOCIATED COMPANY IS ACCEPTANCE IN FULL, WITHOUT QUALIFICATION OF SMS LTD INTELLECTUAL PROPERTY AND DESIGN COPYRIGHT IN HEREPURITY OTHER THAN FOR THE PURPOSE SUBMITTED.

ISO 9001 Registered Firm Certificate No. GR2003174	International Accreditation Board Registration No. 004471	ISO 14001 Registered Firm Certificate No. EN2000348	International Accreditation Board Registration No. 004471

HAS
CONSTRUCTION HEALTH & SAFETY ASSESSMENT SCHEME
Accredited Contractor
www.chsb.gov.uk

Rev	Description	By	Date
A	Original	AHG	25/06/15
B	Module 4 & 5 Layout Changes	AHG	29/06/15

Scale	NTS	Drawn by	AHG	Drawn date	25/06/15	Checked	
Project Number	15.05.008 - 002			Drawing Number			
Revision				Revision	B		